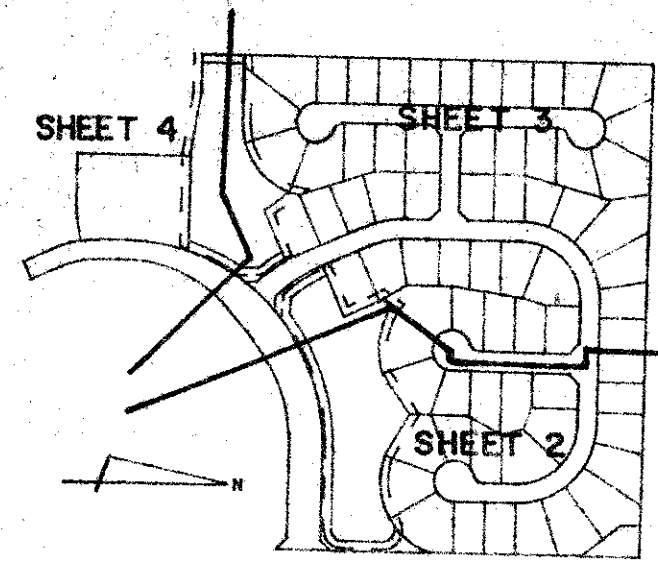


DRAWING NUMBER
53/109

PLAN HOLD CORPORATION • IRVINE, CALIFORNIA
REORDER BY NUMBER 07548



SHEET LOCATION MAP

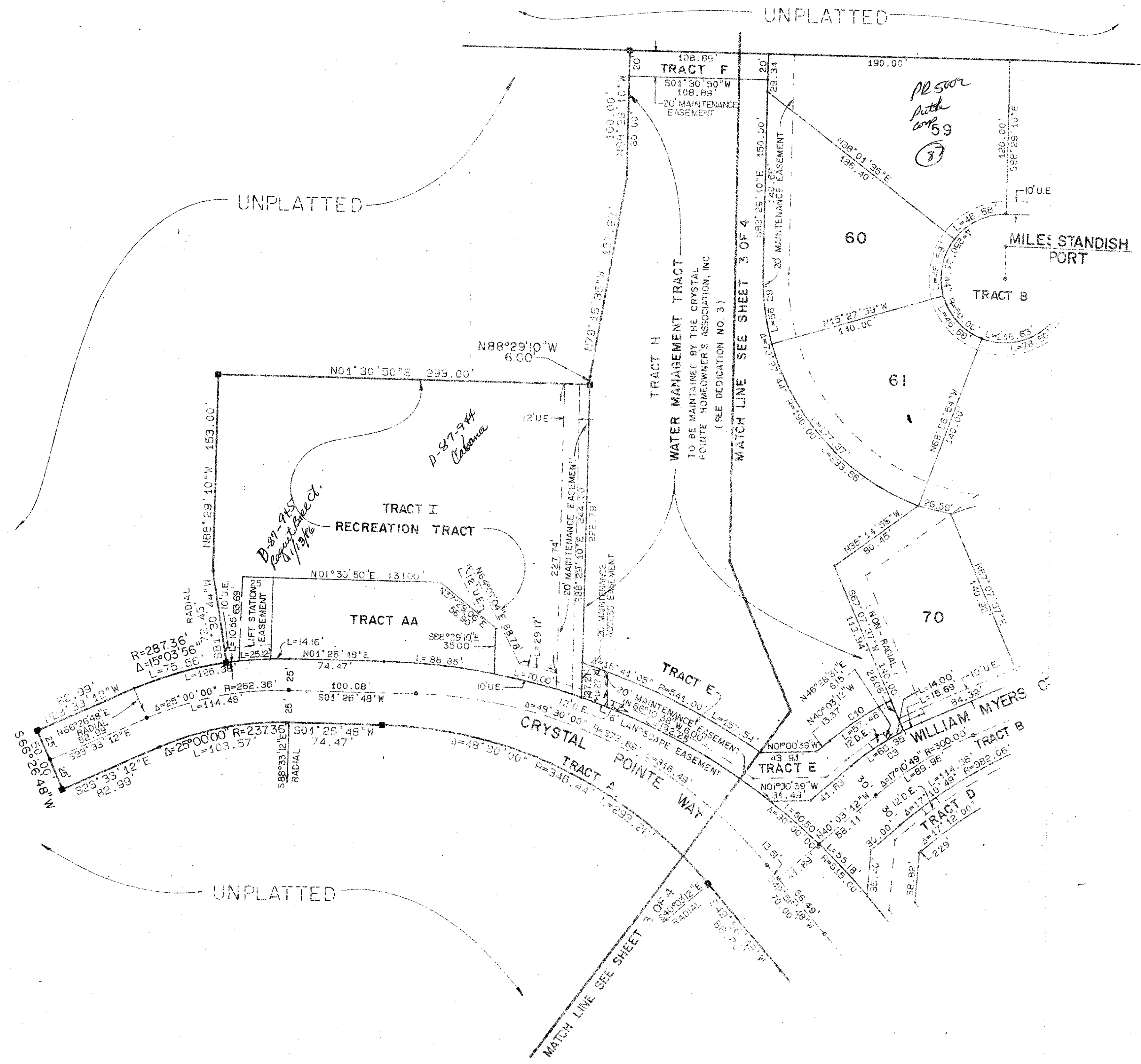
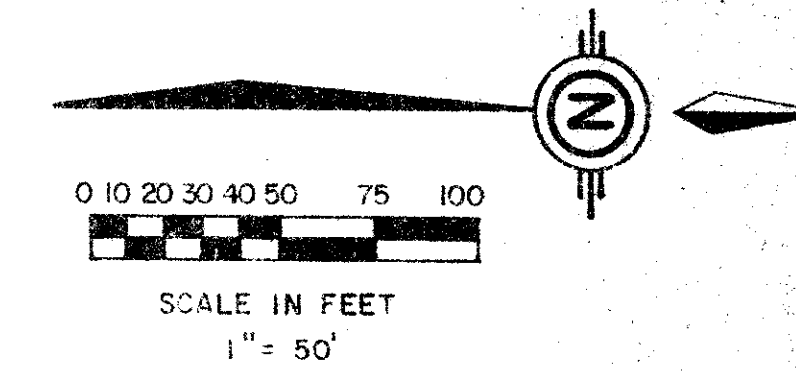
CRYSTAL POINTE PLAT ONE

PART OF CRYSTAL POINTE P.U.D.
SITUATE IN SECTION 29, TOWNSHIP 41 SOUTH, RANGE 43 EAST
PALM BEACH COUNTY, FLORIDA

SHEET 4 OF 4

109

STATE OF FLORIDA
COUNTY OF PALM BEACH
THIS PLAT WAS FILED FOR
RECORD
THIS _____ DAY OF _____
AD, 1986 AND DULY RECORDED
IN PLAT BOOK _____ ON PAGE
_____ AND _____
JOHN B. DUNKLE, CLERK
BY: _____ D.C.



NO.	DELTA	RADIUS	LENGTH
C1	25° 00' 00"	237.36'	103.67'
C2	15° 03' 56"	287.36'	75.66'
C3	17° 10' 49"	217.94'	65.35'
C4	70° 31' 44"	25.00'	30.77'
C5	70° 31' 44"	25.00'	30.77'
C6	73° 31' 02"	25.00'	32.12'
C7	70° 31' 44"	25.00'	30.77'
C8	90° 00' 00"	30.00'	47.12'
C9	124° 42' 57"	30.00'	65.30'
C10	13° 29' 44"	243.94'	57.46'

0291-001 **53/109**

Meridian Surveying and mapping Inc.
2328 SQ. CONGRESS AVE. WEST PALM BEACH, FL

DRAWN	MHC / MEH	DATE	JAN. 1986
CHECKED	K.B.H.	SCALE	1" = 50'
DRAWING NO.	85-P4-035		

CRYSTAL POINTE PLAT ONE
PART OF
CRYSTAL POINTE P.U.D.

DRAWING NUMBER

PLAN HOLD CORPORATION • IRVINE, CALIFORNIA
REORDER BY NUMBER 07548

DRAWING NUMBER

PLAN HOLD CORPORATION • IRVINE, CALIFORNIA
REORDER BY NUMBER 07548

DRAWING NUMBER

PLAN HOLD CORPORATION • IRVINE, CALIFORNIA
REORDER BY NUMBER 07548